

SENTINEL™

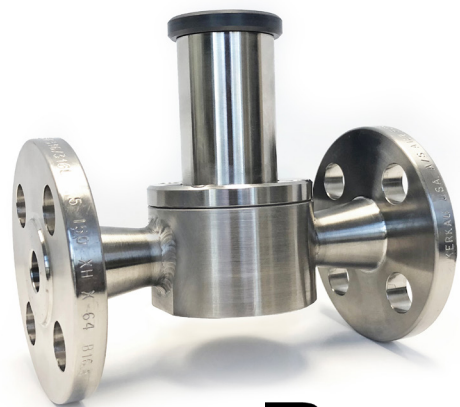
# BACK PRESSURE VALVES PRESSURE RELIEF VALVES



Redesigned from the inside out.

## Eliminate Valve Chatter!

Blacoh's patented Back Pressure Valves and Pressure Relief Valves feature unique flow stabilization technology to deliver improved flow, extend valve service life, and eliminate dreaded valve chatter.



**BLACOH™**  
INDUSTRIES

# The BLACOH Advantage

## Flow Stabilization

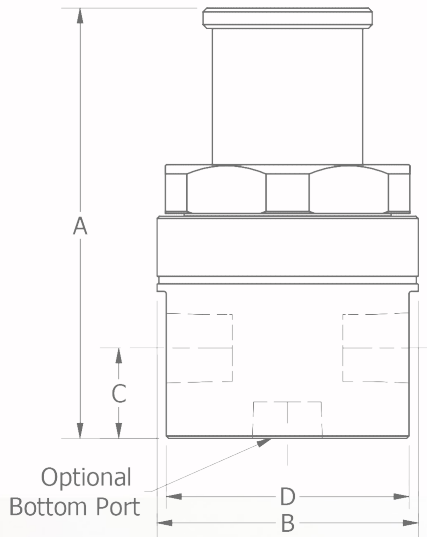
Unique flow stabilization technology improves flow, extends service life, and eliminates valve chatter.

## Spring Force

Internal swiveling spring seat ensures spring force is applied evenly over the diaphragm for more consistent and complete valve closure.

## Seal Performance

Both plastic and metal valves feature a separate ring attachment for more uniform clamping load and improved seal performance.



Valve Dimensions		2 Port 180°		3 Port, 2 Port 90°		
Size (NPT)	B Dia	D Flat	A	C	A	C
Mini 1/4 to 1/2"	2.47"	2.30"	4.24"	0.85"	4.49"	1.09"
1/2 to 1"	3.47"	3.22"	5.47"	1.00"	5.72"	1.20"
1 1/2"	4.47"	3.92"	8.07"	1.38"		
2"	5.49"	4.88"	9.76"	1.75"		

Back Pressure Valves				Pressure Relief Valves		
Flow at 150 PSI pressure drop across valve:						
Size	Part #	Pulsating US GPH	Continuous US GPM	Part #	Pulsating US GPH	Continuous US GPM
1/4"	BP-025-_-T	240	12	PR-025-_-*	560	28
3/8"	BP-038-_-T	260	13	PR-038-_-*	620	31
1/2"	BP-049-_-T	288	14	PR-049-_-*	660	33
1/2"	BP-050-_-T	600	30	PR-050-_-*	1240	62
3/4"	BP-075-_-T	640	32	PR-075-_-*	1260	63
1"	BP-100-_-T	710	36	PR-100-_-*	1300	65
1 1/2"	BP-150-_-T	1500	75	PR-150-_-*	3000	150
2"	BP-200-_-T	2000	100	PR-200-_-*	4300	215

_ Body Material	PVC (PVC), Polypropylene (PP), CPVC (CPVC), PVDF (PVDF), 316L Stainless Steel (SS), additional materials may be available on request
* Diaphragm	PTFE (T) EPDM (E), Viton (V) option on Pressure Relief Valves
Inlet Type	NPT, Socket Weld (SW), BSP (BSP), Flange (F), Union (U) 150# flange, 300# flange standard on 50-250 psi high pressure valves
Configuration	Back Pressure Valves 2 Port 180° (BP), 2 Port 90° (BP90) Pressure Relief Valves 3 Port (PR), 2 Port 180° (PR2P), 2 Port 90° (PR90)
Spring Pressure	5-150 psi 5-50 psi (L), 5-250 psi valves up to 1" (M), 50-350 psi metal valves (H)
Valve Top	PVC, 316L Stainless Steel standard on 50-350 psi high pressure valves CPVC (CPVC), 316L Stainless Steel (SS) available on request

MADE IN THE **USA**

